

Sample Incentive Program

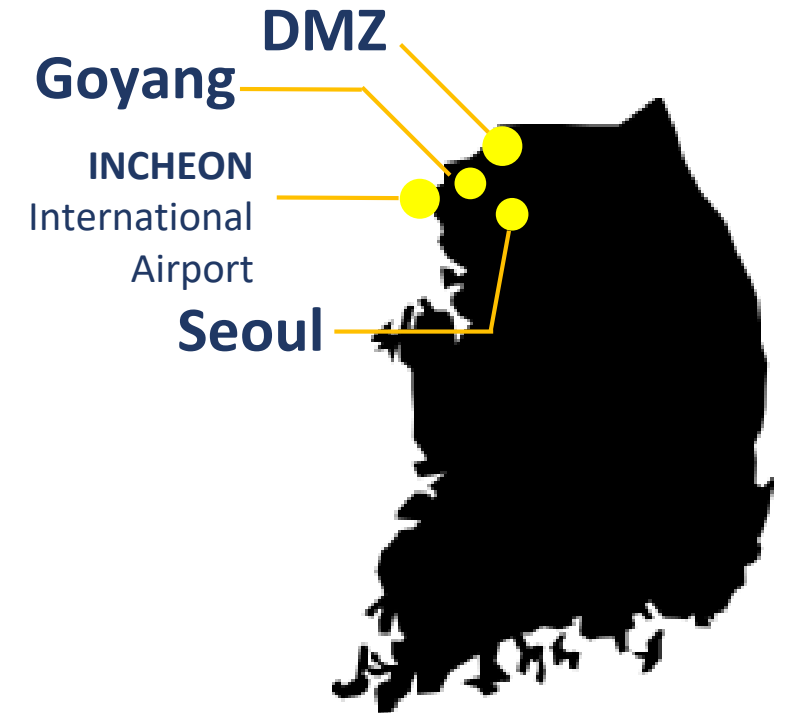
Incentive – Destination Seoul

3N4D



GENERAL INFORMATION

	Day 1	Day 2	Day 3		Day 4
Morning		Gyeongbokgung Palace Chunggaechun Stream DDP	DMZ Tour Imjingak Pavilion – Dorasan Station – Dora Observatory – 3 rd Infiltration Tunnel – Tongilchon Village		Hotel Check Out
LUNCH		Lunch @ N Seoul Tower Hancook	Lunch @ Noeul	Lunch @ Hyundai Motor Studio Kitchen	N/A
Afternoon	Arrived at Incheon International Airport Meet & Greet by Local Guide Transfer to Hotel	Samsung D'light Competitor Shopping @ Gangnam District	<i>Paju Bookcity</i> <i>Hyundai Motor Studio Goyang</i>	<i>Floating Island</i> <i>Rooftop Taekwondo</i>	Transfer to Incheon International Airport
Dinner	Welcome Reception at Hotel	Dinner @ Samwon Garden	Gala Dinner @ Hyundai Moter Studio Goyang	Gala Dinner @ Vista Pub	



HOTEL – CONRAD HOTEL SEOUL



Located at the heart of Financial District, Yeouido.

Star: ★ ★ ★ ★ ★

HOTEL – NOVOTEL SEOUL DRAGON CITY



Located at the city-center, Yongsan.

Star: ★ ★ ★ ★ ★

HOTEL – RYSE HOTEL HONGDAE



Located at the heart of Young Cultural District, Hongdae.

Star: ★ ★ ★ ★

PROGRAMS at glance.
DAY 2



Visit **Gyeongbokgung Palace**, **Chunggyecheon Stream**, **Dongdaemun Design Plaza**, Lunch @ **Namsan Tower Samsung D'Light**, Competitor shopping at **Gangnam District**, Dinner at **Samwon Garden**



GYEONGBOKGUNG PALACE

Built in 1395, Gyeongbokgung Palace is the Joseon Dynasty royal palace in Seoul, and it represents Korea's national sovereignty. Despite multiple attempts to burn down the palace, Gyeongbokgung rose like a phoenix from the ashes and is a symbol of Korea's "Never give up attitude". The beautifully lit palace grounds that surround a peaceful pond have made Gyeongbokgung a must visit destination in Seoul.



CHEONGGYECHEON STREAM

A once neglected stream in the middle of the city, Cheonggyecheon has now become a beautiful escape place for the weary. With lanterns festivals and food trucks lined up along the revived stream, locals and foreigners come flocking down in the evening to take in the beauty of Cheonggyecheon. The square was created based on the design of traditional Korean *bojagi* (a colorful wrapping cloth), it features the elegant beauty of traditional stonework that is colorful yet refined.



DONGDAEMUN DESIGN PLAZA

Dongdaemun Design Plaza (DDP) has a meaning of Dream, Design, and Play. It holds various exhibitions, fashion shows, forums, conferences, and other domestic and international events.

Korean's strongly believe that a successful future cannot be achieved without acknowledging one's past. Therefore, despite all the advancements in architecture, old historical sites that were discovered during the construction of DDP were conserved and structures were built around it without disrupting the original site.



COMPETITOR SHOP AT GANGNAM DISTRICT

A leading consumer and producer in the automobile industry, South Korea has now become a force to reckon with. The competition and the panache of the available brands are up for display at Gangnam-gu's up scale, modern center. It is also home to gleaming skyscrapers, designer brands and stylish nightclubs where big-name DJs spin techno and house. Dining options span high-end restaurants to bars serving fried chicken and soju (rice wine). Starfield COEX Mall draws visitors to its aquarium, while Seoul Arts Center has a design museum and a theater. Buddhist temple Bongeunsa dates to the 8th century.



SAMSUNG D'LIGHT

One can visit Samsung D'Light to truly experience how technologically advanced Korea is, and how it has positively used this advancement for the greater good of people. It is a global exhibition space that showcases the latest product lineup by Samsung Electronics. The name d'light combines the words 'digital' and 'light' to correlate with the company's vision of being 'a guiding light to the digital world' and sharing the excitement and delight of digital technology through interaction with visitors.



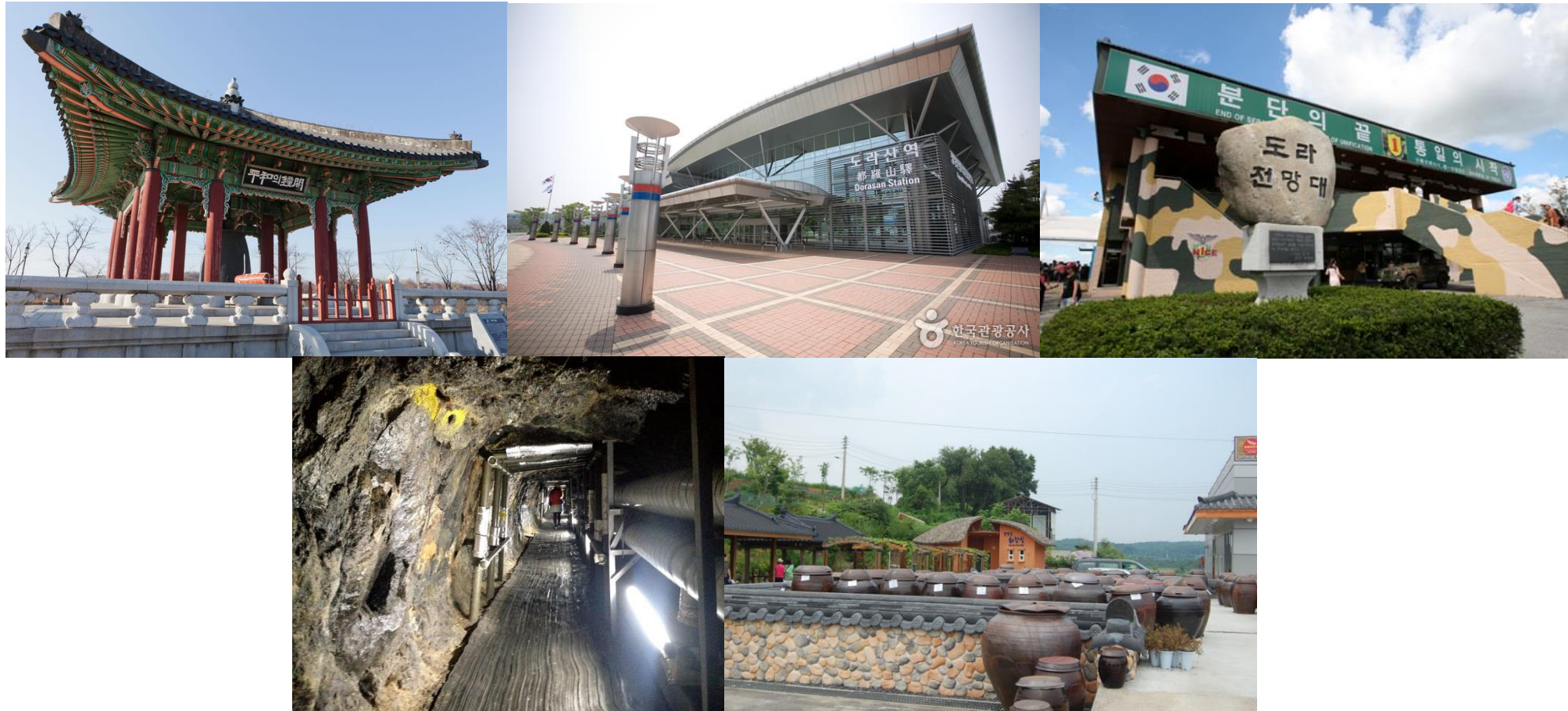
LUNCH: Hancook at N Seoul Tower

Top of the Seoul City with the spectacular panoramic view, Hancook serves Charcoal-grilled boston butt or Broiled Mero Fillet marinated with Miso Sauce. These delicately touched menu represent what Korean Fine Dining can be.



DINNER: Samwon Garden

With the surrounding of modern Korean traditional architecture, finely touched beef short rib marinated into 45 years of traditional Sause. You can experience the best taste of marinated beef can be.



DMZ Tour – Imjingak Pavilion – visit Dorasan Station – Dora Observatory – The 3rd Infiltration Tunnel – Tongilchon Village



IMJINGAK PAVILION

Imjingak Resort, located 7 km from the Military Demarcation Line, is now at the forefront of tourism related to the Korean War. Imjingak was built in 1972 with the hope that someday unification would be possible. The three-storied Imjingak is surrounded by several monuments, Unification Park and North Korea Center.



DORASAN STATION

Dorasan Station, a railway station on the Gyeongui Line, is the northernmost stop on South Korea's railway line. Located 56 kilometers from Seoul and 205 kilometers from Pyongyang, the station was opened as a tourist attraction on April 4, 2002 right before the 2002 Korea-Japan World Cup.



DORA OBSERVATORY

Situated in Paju-si, Gyeonggi-do and at the northernmost point of the Military Demarcation Line, Dora Observatory replaced the previous Songaksan Observation Post. From the observatory, visitors can overlook North Korea and various locations including Gaeseong, Songaksan, Kim Il-Sung Statue, and Cooperation Farm (Geumamgol). The observatory offers 500 seats, VIP rooms, and abundant parking space. It was first opened to the public in January 1987.



THE 3RD INFILTRATION TUNNEL

The 3rd Tunnel was discovered by South Korea in 1978. It spans over 1,635m in length, 2m in width, and 2m in height and is located 52km from Seoul. It is estimated that approximately 30,000 soldiers could move through the tunnel per hour. The scale is similar to the 2nd Tunnel, but it was thought to be more threatening as an invasion tool than the 1st and 2nd Tunnels. Located only 4km away from Imjingak toward the southwest and 3.5km from the Tongilchon area, it is accessible by car in approximately 45 min from Seoul.



PAJU BOOK CITY

Located in Paju, Gyeonggi-do, Paju Book City is a giant cultural complex, belonging to the Ministry of Culture, Sports, and Tourism. It is home to 250 publishers with over 10,000 workers. It covers the entire process of publishing from planning to printing and distribution.



HYUNDAI MOTOR STUDIO

Hyundai Motorstudio Goyang tells you unforgettable stories filled with exciting and unique automotive experiences. Red Dot design awarded architecture sharing the past, present and future of the Korean automotive legacies. Other than just seeing it, Hyundai Motor Studio allows us to experience the automotive industry with our five senses.



LUNCH: Noeul

In the middle of Paju Bookcity Forest of Wisdom, Noeul is reside. This unique restaurants give us the taste of Korea Italian Fusion Pasta to you. Combination of Korean and Italian Taste of Pasta and Salad will let you feel different aspect of Italian taste to you.



OPTION 2 : ROOFTOP TAEKWONDO

World Taekwondo Headquarters Kukkiwon offers taekwondo performances. Their original performance, “[Great Taekwondo](#),” demonstrates taekwondo skills based on the theme of “Korea’s Spirit.” With its dynamic music, gorgeous lights, and powerful taekwondo moves, the show has been adored by both domestic and international audiences. The audience is also given the opportunity to try to demonstrate board-breaking and take photos after the show.



OPTION 2 : SOME SEVIT FLOATING ISLAND

Some Sevit is a culture complex made up of three man-made floating islands located near the southern end of Banpo Bridge. The islands were created with the theme of "flowers of the Hangang River" and represent the view, life, and the earth, as well as a flower in various stages of life. The largest island, 'Some Gavit' symbolizes the view and takes the form of a flower in full bloom.



LUNCH: Hyundai Motor Studios Kitchen operated by Haevichi Hotel

Red dot award winning architecture, open kitchen restaurants resides with modern furniture. Organic local imported vegetable, meat and ingredients, hotel chef prepares Fusion, Asian, and Western cuisine to you.

GALA DINNER- OPTION 1



HYUNDAI MOTORS STUDIO GOYANG

GALA DINNER- OPTION 2



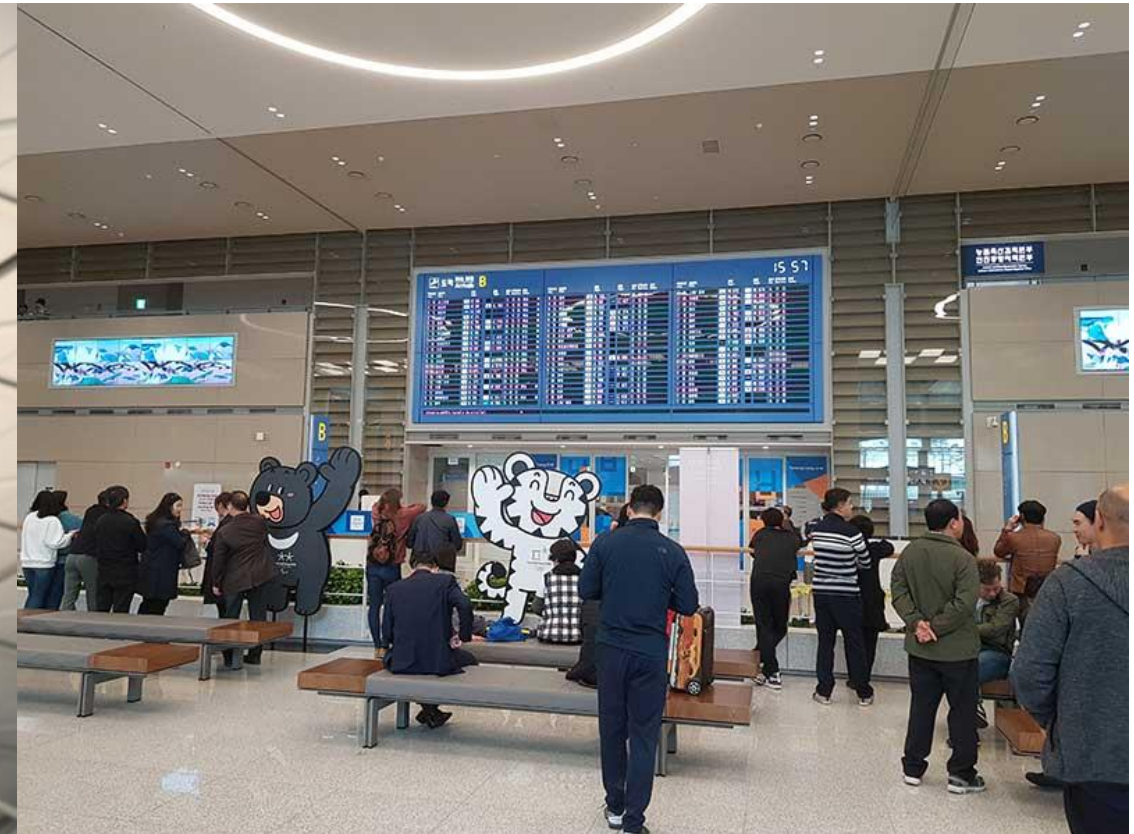
FLOATING ISLAND VISTA

VEHICLE – Transfer via Standard Coach.



45 SEATERS Standard Coach





With English-Speaking guide on board.



Greeting Service at Airport

Greet guests upon arrival & Sending of Departure: Escort them to a meeting point for the designated driver and to the Departure & Ticketing point.

Airport Terminal 1 & 2 Information

Flight name	Airline	Arrival time	From	Terminal	Flight day							Flight period
					Mon	Tue	Wed	Thu	Fri	Sat	Sun	
KE906	 KOREAN AIRLINES	12:55	FRA	T2	●	●	●	●	●	●	●	2019.06.02~2019.09.01
KE906	 KOREAN AIRLINES	12:55	FRA	T2	●	●	●	●	●	●	●	2019.09.02~2019.10.27
LH712	 Lufthansa LUFTHANSA GERMAN AIRLINES	11:20	FRA	T1	●	●	●	●	●	●	●	2019.04.01~2019.10.26
OZ542	 ASIANA AIRLINES ASIANA AIRLINES	11:50	FRA	T1	●	●	●	●	●	●	●	2019.04.01~2019.10.27

Upon schedule is the Direct Flight information from Frankfurt to Incheon International Airport

* Depends on the departure, the information will be changed to the subjected route.

Airport Terminal 1

Arrival route information

1. Arrival	Arrival at Incheon Airport Terminal 1
2. Quarantine inspection (visitors)	Submit the health status questionnaire and pass through the inspection area.
3. Immigration inspection	Pass through immigration
4. Baggage claim	Pick up checked baggage from the baggage claim area
5. Quarantine inspection (animals and plants)	Only required if you are traveling with animals and/or plants
6. Customs	Fill out the customs form and submit to the customs officer
7. Entry	Proceed to the Arrival Hall (Welcome Hall)
8. Going home	Check the location of public transportation



Airport Terminal 2

Arrival route information

1. Arrival	Arrival at Incheon Airport Passenger Terminal 2
2. Quarantine inspection (visitors)	Submit the health status questionnaire and pass through the inspection area.
3. Immigration inspection	Pass through immigration
4. Baggage claim	Pick up checked baggage from the baggage claim area
5. Quarantine inspection (animals and plants)	Only required if you are traveling with animals and/or plants
6. Customs	Fill out the customs form and submit to the customs officer
7. Entry	Proceed to the Arrival Hall (Welcome Hall)
8. Going home	Check the location of public transportation

Terminal 2





THANK YOU



June Kim

CREVEN DMC KOREA TEL : T. +82-2-570-3545 | FAX : F. +82-2-571-9921
E-MAIL : master@crevenkorea.com | HOMEPAGE : www.crevenkorea.com